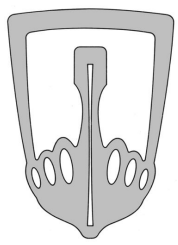


SD1 TRAVELLED SPARES™

incorporating **4-WHEELS-DRIVING™**



sd1travelledspares@mac.com
www.sd1travelledspares.info
Gareth 021 171 8698



Operating from its base in Christchurch, New Zealand, SD1 Travelled Spares specialises in the supply of Rover parts removed from Series 1 & 2 cars—keeping enthusiasts' cars on the road at reasonable rates.

The Rover SD1 Series 1 models that were assembled in New Zealand, have a reputation for high build-quality, better electrical systems and fewer leaks. We also have the advantage of not having salt spread on our roads over winter, consequently the rust level in older vehicles is minimal, in fact we have some (almost) daily runners topping 100 years.

We also supply panelbeaters with body panels, glass, lights, etc.

When requesting parts, it may be advisable to send photographs.

—if it's in stock, we have it—

*** Some scarce or unavailable items we have re-manufactured**
World-wide enquiries for small items welcome

Computerised systems resetting, replacement key encoding

Bushes: pics indicative only



• Firewall*



• Transmission selector linkage*, BorgWarner

Suspension control arms*

Fully re-conditioned

Steering track rod*:

Newly re-manufactured



Door handle gasket set (of 4)*:

We have had dies made for seals stamped in rubber (EPMU) for front and rear doors (easy fit - will stretch over loosened handles, without removal or disconnection, just slacken the two nuts indicated)



Re-manufactured parts*

Series 2 headlamp brackets, lh & rh, laser-cut stainless steel



LED lighting

Replace your conventional lamps with low-current, low-heat light emitting diodes:

- Types available include **super bright** white, red and amber variants (coloured types will give new life and WoF to faded indicator and stop lenses)
- Flasher relay replacement may be required
- Also available are caravan fittings and 230VAC domestic types

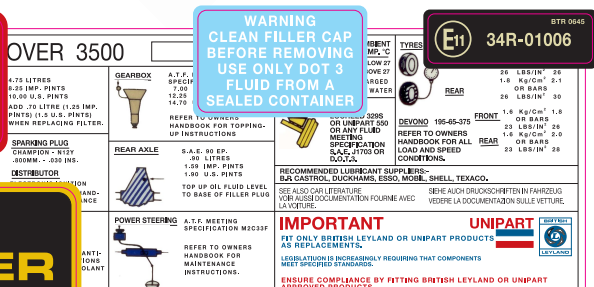


Stickers - any marque*

One-off, replica under-bonnet or machinery labels printed to order on adhesive vinyl and over-glossed.

Aluminium plates also available. Don't let old or damaged stickers spoil your restoration project.

Free setup - just supply a sample, or legible digital photo with final dimensions.



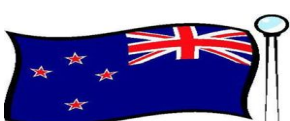
These samples are printed from reconstructed artwork. Magenta outlines denote computer cut-lines.



40th Anniversary windscreen sticker, commissioned for the ARCC Rally in NZ. 160 x 41mm, printed on vinyl and gloss-laminated

ARTWORX GRAPHIC DESIGN & PRINT
artworx@clear.net.nz

in conjunction with **SD1 TRAVELLED SPARES™**



WANTED—Rover SD1s, RR Classics & LR Discoverys for dismantling
in Canterbury area—any condition

